



# 技术参数

technical parameter

DM-B0832-1

## 1、电气性能 Electrical Characteristics

序号 NO.	项目 Item	测试条件 Measuring condition	规格 Specification
1	额定电压 Rated voltage	加在端子两端的电压 Voltage added to both ends of the terminal	DC3.0V
2	额定转速 Rated speed	在额定电压及负荷下测试 At Rated voltage and rated load	12500±2500 RPM
3	额定电流 Rated current	在额定电压及负荷下测试 At Rated voltage and rated load	90 mA MAX
4	堵转电流 Stall current	额定电压下锁定电机轴条件下测试 At rated voltage and shaft locked	150 mA MAX
5	起动电压 Starting voltage	在额定负载下转子任意位置 At rated load any position of rotor	DC 2.2V MAX
6	电枢电阻 Terminal resistance	端子阻抗 Measure between terminals	1 Phase contact: 30 Ω ± 15%
			2 Phase serial: 58 Ω ± 15%
			2 Phase parallel: 16 Ω ± 15%
7	绝缘电阻 Insulation resistance	100V 直流电压下导线与机壳之间 Test between lead wire and case at DC 100V	10M Ω MIN
8	绝缘电压 Insulation voltage	在导线与马达机身之间提供 DC50V 电压一分钟 DC50V between lead wire and motor case for one minute	No destruction occurs
9	机械噪音 Mechanical noise	额定电压下, 背景噪声 ≤ 25 dB(A), 电机固定在测试夹具上, 拾音器沿轴向正对电机平面, 距离 10 cm。 At rated voltage, Back ground noise: 25 dB(A) Max, Fix the motor in a test jig. Microphone is faced to the motor and recedes by 10cm	50dB(A)MAX
5-10	振动量 Vibration swing		≥ 1.0G

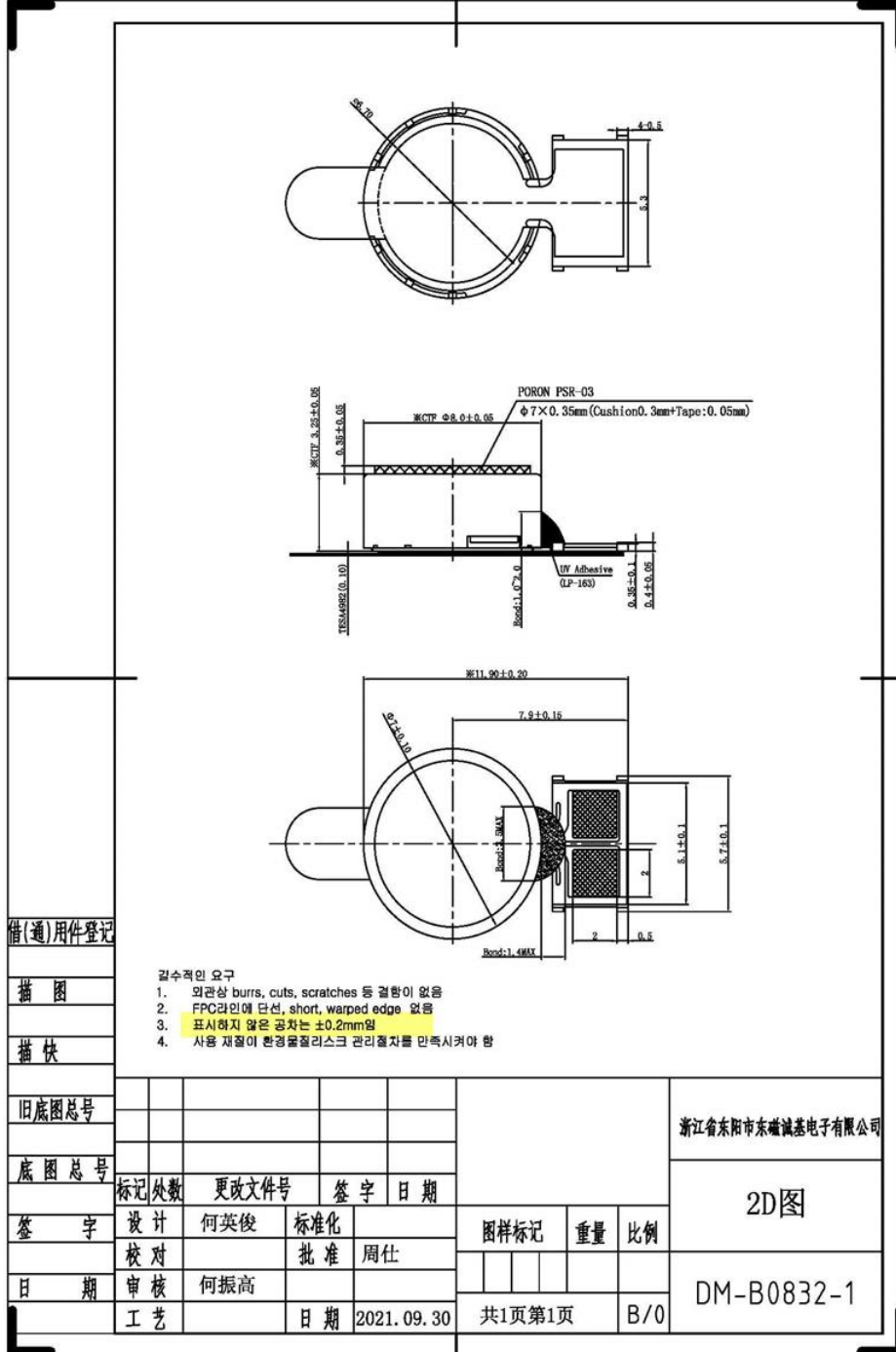


# 技术参数

technical parameter

DM-B0832-1

## 2、产品外形图 Product Drawing



technical requirement

1. Unmarked dimension tolerance is  $(\pm 0.2$ mm).
2. An example of the code-jet method is given below:

Company code D 21 year

8 9 A 1 The current  
mon day team batch